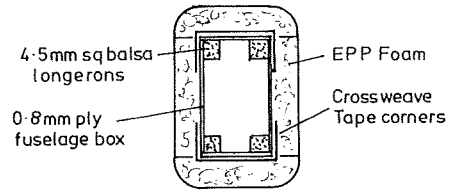
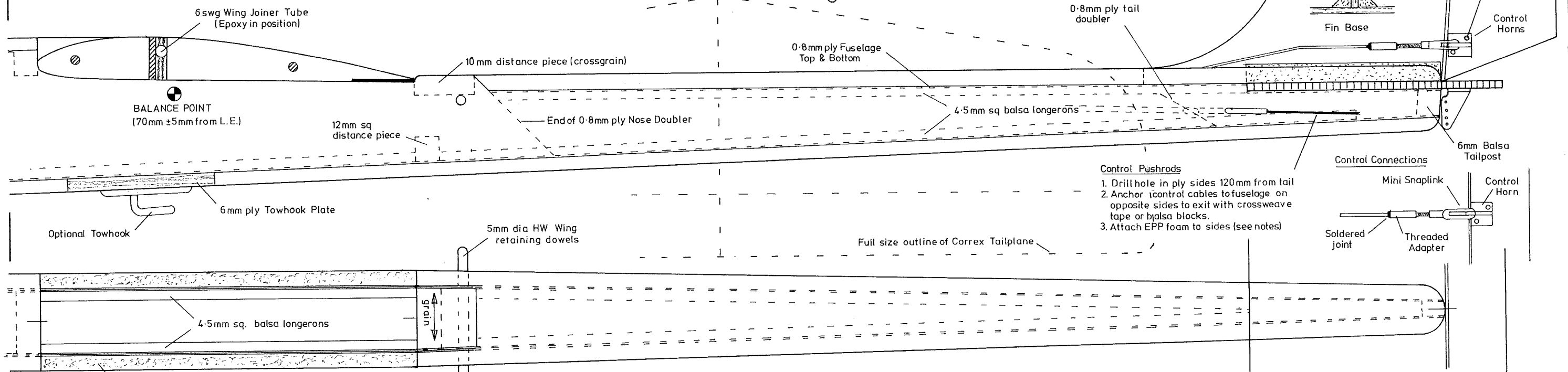
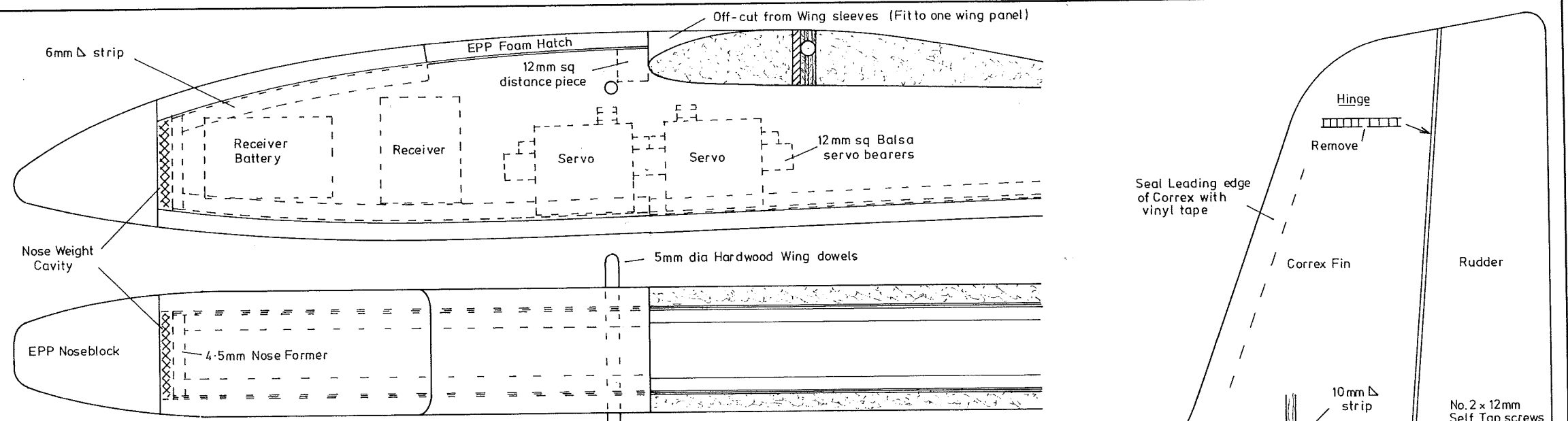


Eppi-SOAR

Designed by: Stan Yeo
 Span: 1980mm Slope / Thermal Soarer



Fuselage X Section



- Control Pushrods**
1. Drill hole in ply sides 120mm from tail
 2. Anchor control cables to fuselage on opposite sides to exit with crossweave tape or balsa blocks.
 3. Attach EPP foam to sides (see notes)

