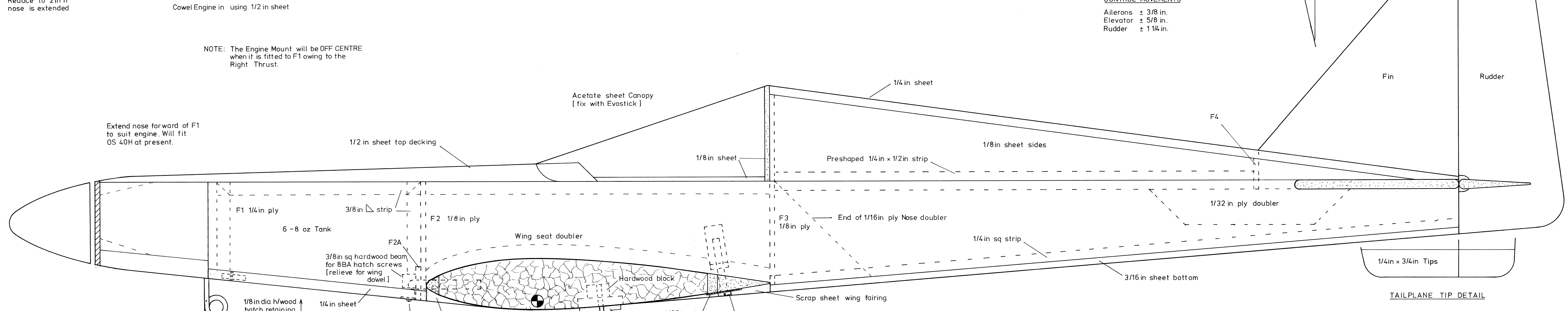


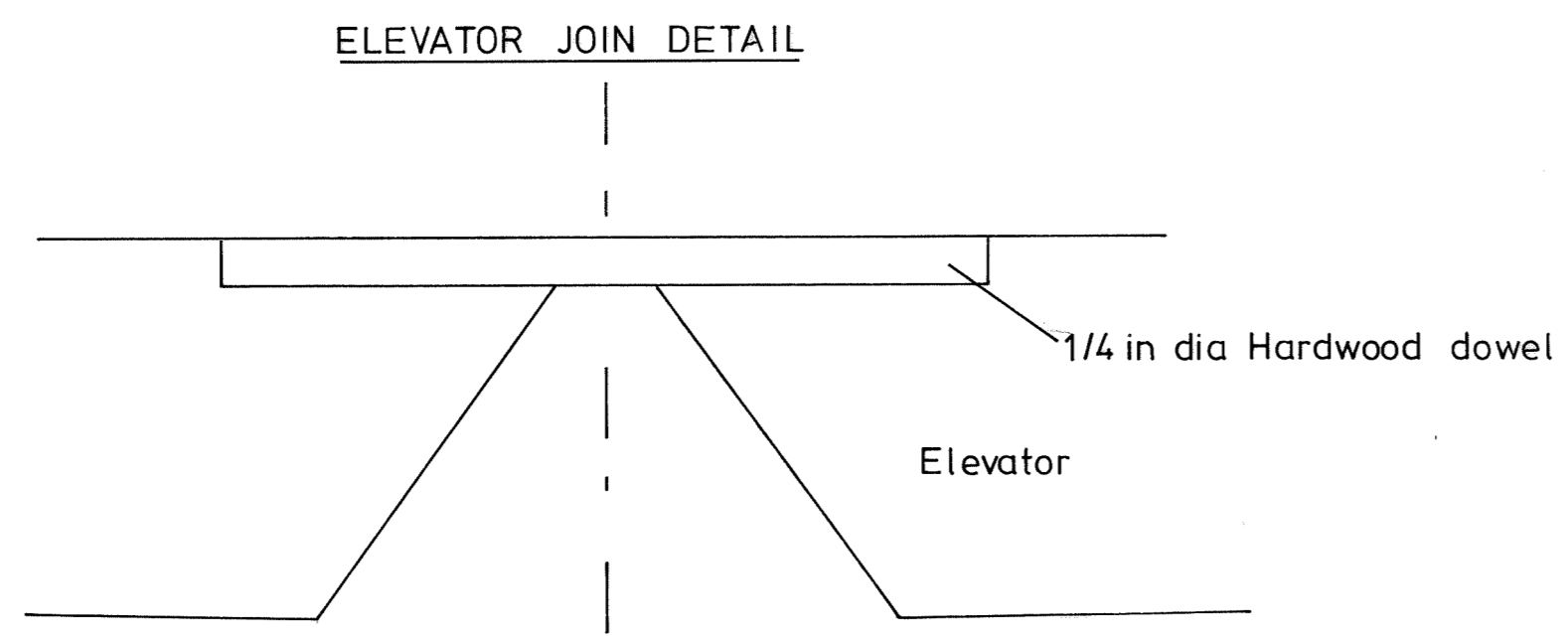
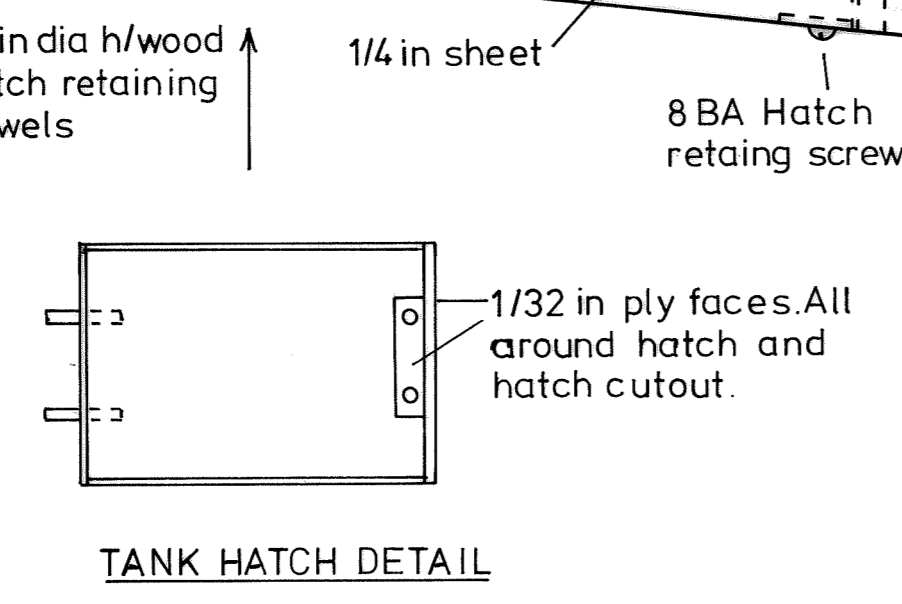
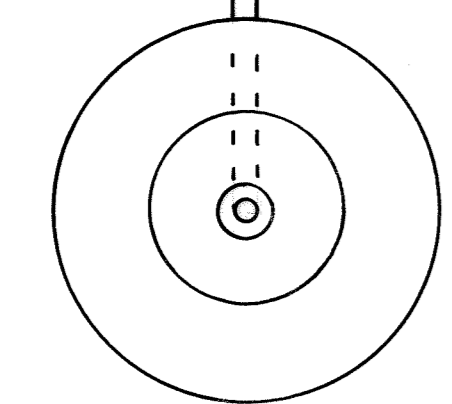
CONTROL MOVEMENTS
 Ailerons ± 3/8 in.
 Elevator ± 5/8 in.
 Rudder ± 1 1/4 in.

NOTE: The Engine Mount will be OFF CENTRE when it is fitted to F1 owing to the Right Thrust.



Extend nose forward of F1 to suit engine. Will fit OS 40H at present.

10 swg Noseleg



- WING BUILDING STEPS**
1. Fit Leading Edge & Rear Spar [Epoxy] Sand to shape [180 grade Wet and dry]
 2. Fit Root ribs & Tips Sand to shape.
 3. Join Wing after cutting wing dowel slot.
 4. Fit wing dowel & make Aileron Servo box
 5. Fit Ailerons & Aileron Torque Rods.
 6. Fit Trailing Edge & shape.
 7. Fit U/C Mounts.
 8. Fibreglass bandage Centre Section and sand to shape.

APOLLO
 Designed by: Stan. Yeo.
 50in span .30-.45 cu in Engines
 Low Wing Sport Aerobatic Power Model

All wood balsa unless otherwise stated